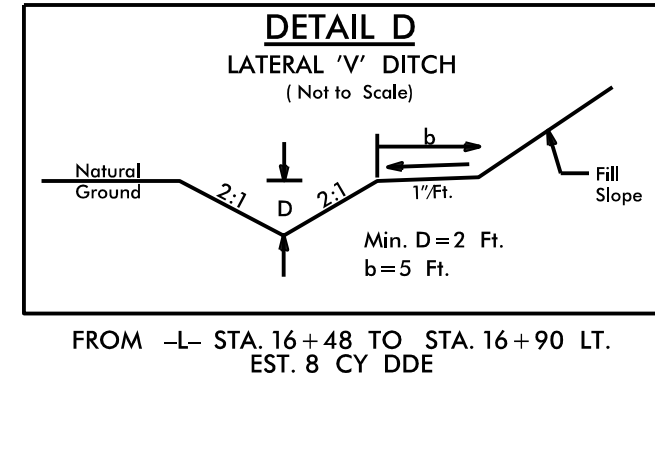
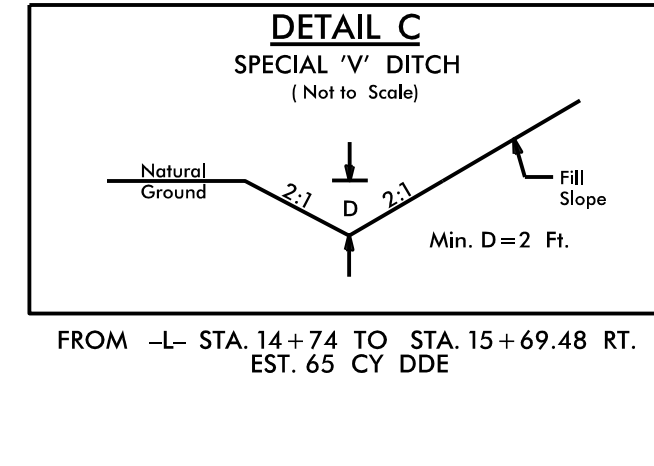
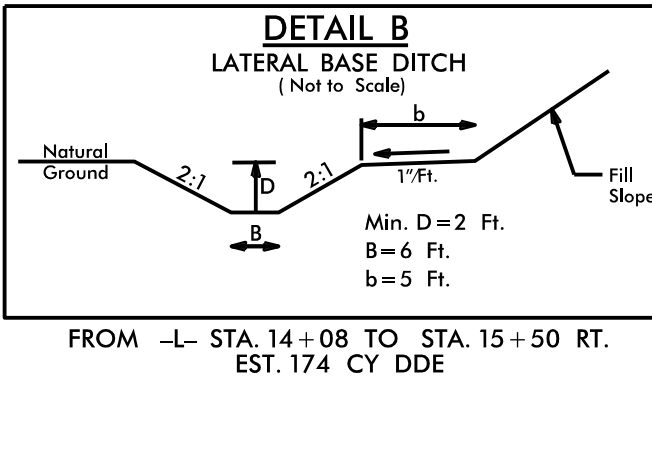
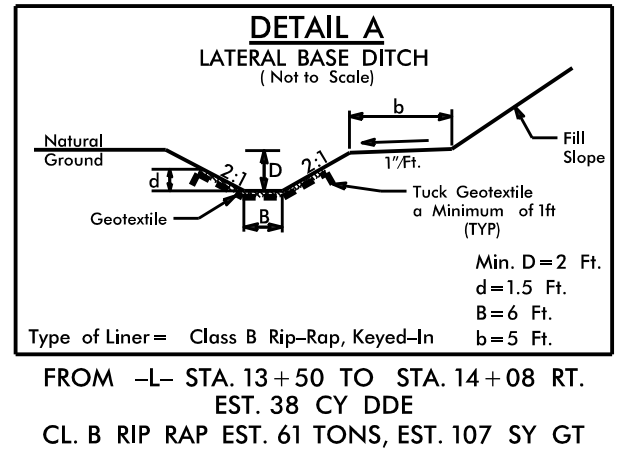
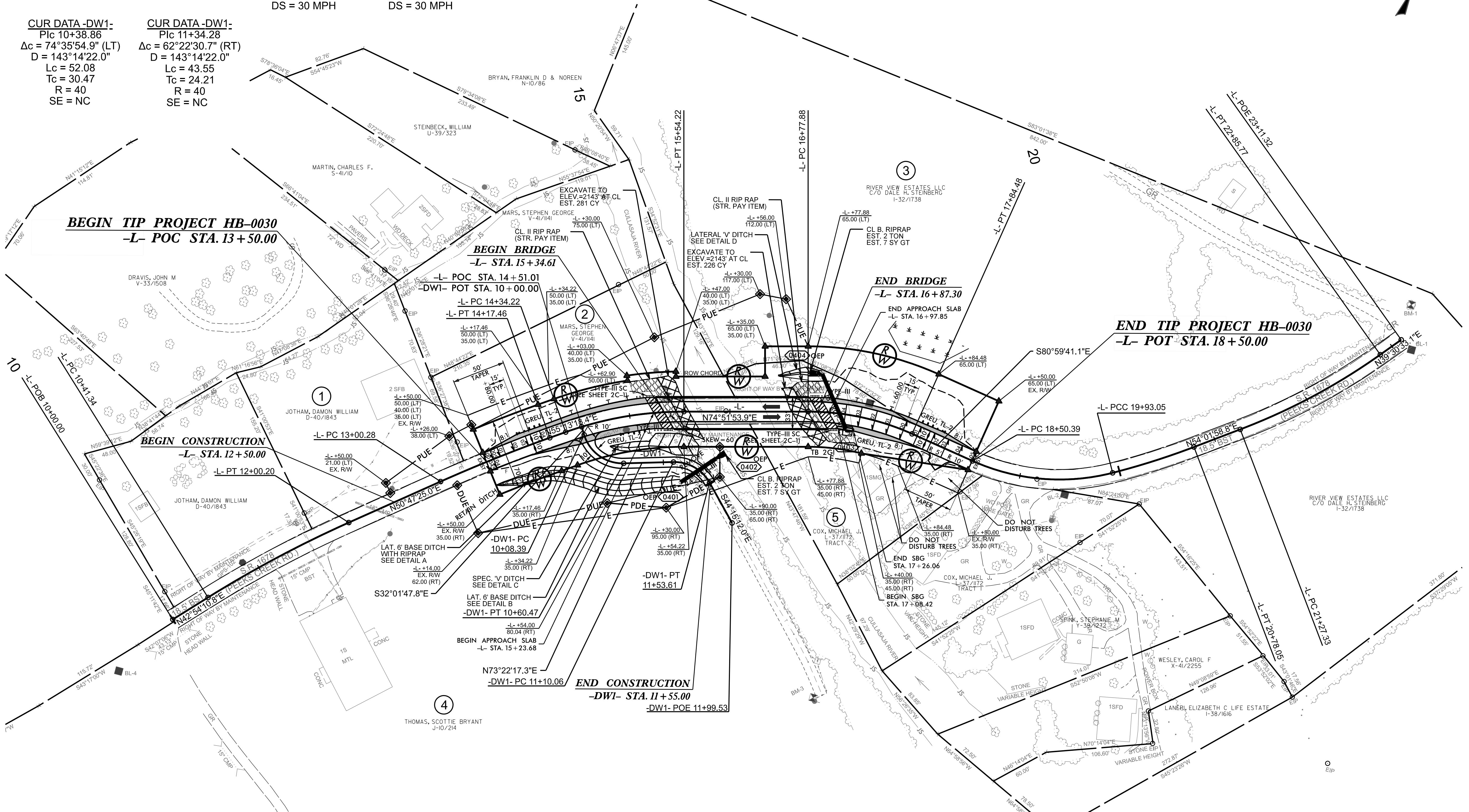


<u>CUR DATA -L-</u> Plc 11+20.89 $\Delta c = 07^{\circ}53'14.2''$ (RT) D = 04°57'53.9" Lc = 158.86 Tc = 79.55 R = 1.154 SE = EXIST.	<u>CUR DATA -L-</u> Plc 13+58.90 $\Delta c = 04^{\circ}25'53.5''$ (RT) D = 03°46'54.8" Lc = 117.18 Tc = 58.62 R = 1.515 SE = EXIST.	<u>CUR DATA -L-</u> Plc 14+94.81 $\Delta c = 19^{\circ}38'35.5''$ (RT) D = 16°22'12.8" Lc = 119.99 Tc = 60.59 R = 350 SE = 0.040 R.O. = 60' DS = 30 MPH	<u>CUR DATA -L-</u> Plc 17+31.98 $\Delta c = 24^{\circ}08'25.0''$ (RT) D = 22°38'47.6" Lc = 106.60 Tc = 54.10 R = 253 SE = 0.040 R.O. = 60' DS = 30 MPH	<u>CUR DATA -L-</u> Plc 19+24.54 $\Delta c = 38^{\circ}33'20.0''$ (LT) D = 27°01'34.7" Lc = 142.66 Tc = 74.15 R = 212 SE = EXIST.	<u>CUR DATA -L-</u> Plc 20+35.60 $\Delta c = 06^{\circ}25'00.0''$ (LT) D = 07°32'55.9" Lc = 85.00 Tc = 42.55 R = 759 SE = EXIST.	<u>CUR DATA -L-</u> Plc 22+06.98 $\Delta c = 14^{\circ}31'25.8''$ (LT) D = 09°10'02.4" Lc = 158.43 Tc = 79.64 R = 625 SE = EXIST.
--	--	--	--	--	---	--

<u>CUR DATA -DW1-</u> Plc 10+38.86 $\Delta c = 74^{\circ}35'54.9''$ (LT) D = 143°14'22.0" Lc = 52.08 Tc = 30.47 R = 40 SE = NC	<u>CUR DATA -DW1-</u> Plc 11+34.28 $\Delta c = 62^{\circ}22'30.7''$ (RT) D = 143°14'22.0" Lc = 43.55 Tc = 24.21 R = 40 SE = NC
---	---



FOR -L- PROFILE SEE SHEET 5
FOR -DW1- PROFILE SEE SHEET 5
FOR PAVED SHOULDER AND
GUARDRAIL DETAILS SEE SHEET 2B-1
FOR STRUCTURE PLANS SEE
SHEETS S-1 THROUGH S-27

HB-0030

4

NORTH CAROLINA
DEPARTMENT OF TRANSPORTATION
MACON COUNTY

ROADWAY DESIGN UNIT
ROADWAY DESIGN
ENGINEER

SEAL

10/7/2025

HYDRAULICS
ENGINEER

SEAL

10/7/2025

PREPARED BY
DRMP
DRMP, INC.
5808 FARMINGTON PLACE, SUITE 100
RALEIGH, NC 27606
NC LICENSE NO. F-1524 (919) 872-8115

REVISIONS